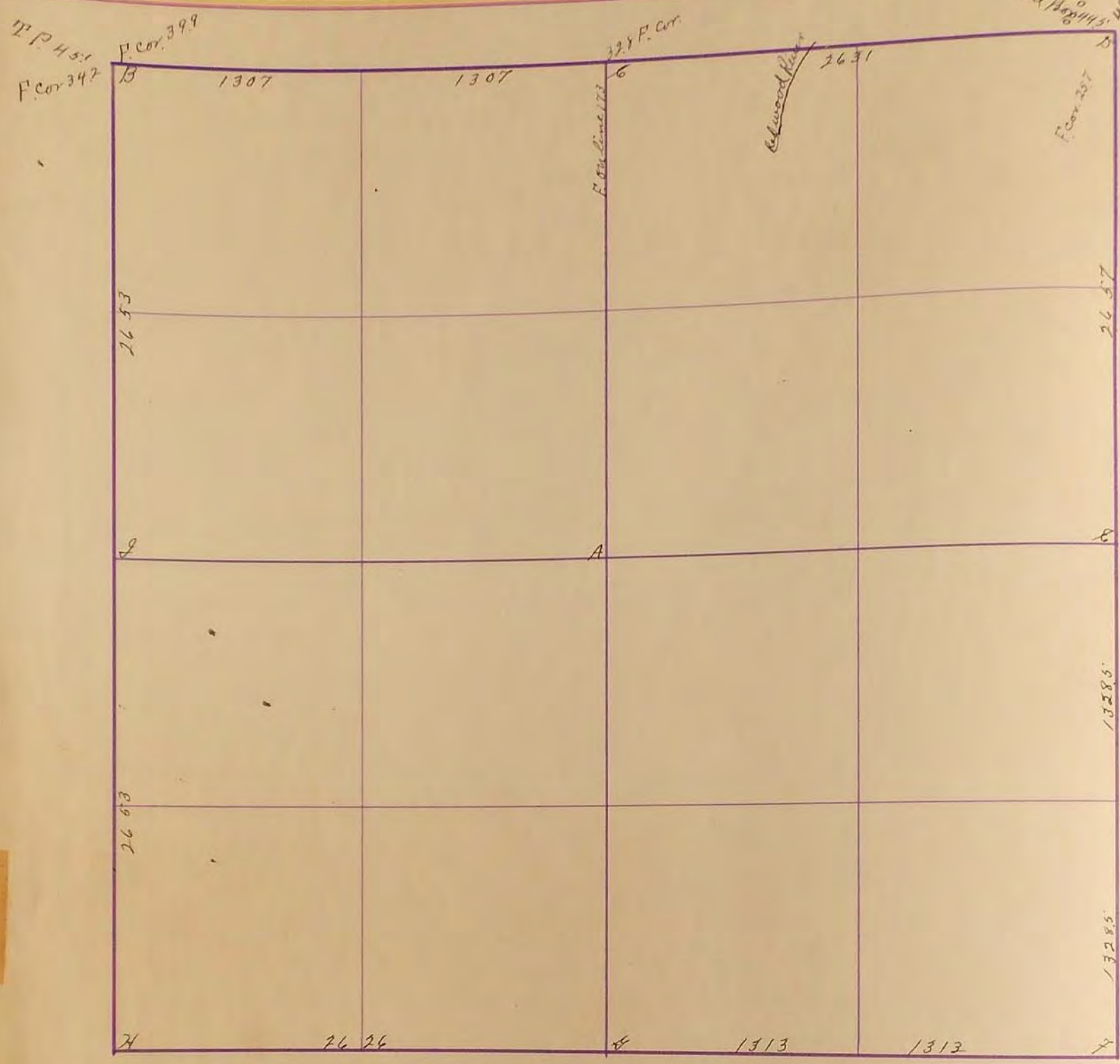


SURVEYOR'S RECORD

Section 20

Township 108

Range 113



20
21

July 15 - 1909 June 25 1925
J. H. Hoolstinecraft

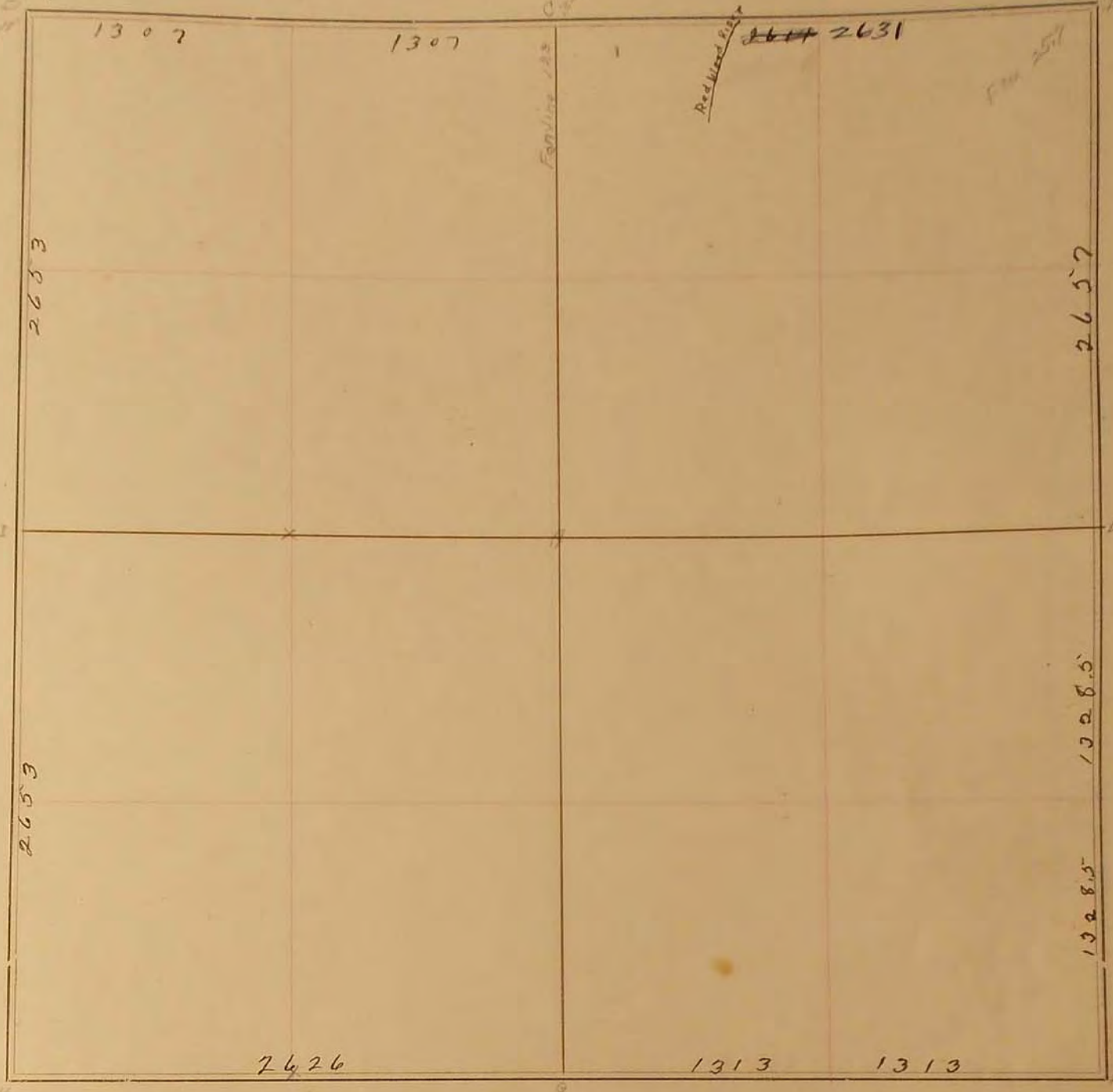
- B. Stone
- G. Stone
- D. Blue stone
- "D" - Mail box N.W. 40⁸; F. Cor S.W. 41⁸; Tel pole N.E. 51⁸
- "E" - Post on Line crest 16⁵'
- C. "2x2 Hub" R.P. Bottle cap in Cor. fence post S. 51.2'; R.P. Edge of steel post S.E. 60.4' (1956)
- D. "Hub over conc. stone" R.P. Bottle cap in Cor. fence post N.W. 65.7'; R.P. Bottle cap in power pole S.W. 69.5' (1956)

1969

- "E" Iron Pin R.P. N+C
P.P. NW - 51-35'
2x2 Hub NW - 67.00'
- D. Iron Pin in Oil Mat.
R.P. N+C P.P. NW - 69.00'
SW - 119.00'

SURVEY No. _____

Section 20 Town 108 Range 43



FIELD NOTES.

July, 15, 1909, June 25, 1915
J.W. Woolstenroft

June 8-1956 M.E. Koopman

- G
- H
- I
- J
- K
- L
- M
- N
- O
- P
- Q
- R
- S
- T
- U
- V
- W
- X
- Y
- Z

X 1/2" Stakes 3/4" side 1/2" in center of head with Nut on Top
 with 1/2" Steel T Fence post with Anchor UP.